

# **work station mats**

Always walk on the safe side



# Table of contents

- **Ergonomic, with closed surface**
  - Yogameter 4
  - Yoga Super 5
  - Yoga Deck 6
  - Yoga Worklight 7
  - Yoga Spark 8
  - Yoga Industrie 9
  - Yoga Flex 10
  - Yoga Flex Industrie 11
  - Yoga Dome 12
  - Yoga Lock 13
  - Yoga Ergonomie 14
  - Yoga Ergonomie B1 15
  - Yoga Ergonomie ESD 16
  - Yoga Ergonomie B1 + ESD 17
- **Ergonomic, with perforated surface**
  - Yoga Allround 20
  - Yoga Hygien NBR 21
  - Yoga Hygien NR 22
  - Yoga Grid 23
  - Yoga Roll 24
  - Yoga Holzrost 25
  - Yoga Holzrost GL 26
- **Wall-to-wall floor covers**
  - Yoga Tile 28
  - Yoga Tile Schiefer 29
  - Yoga Rost 30
- **Special floor covers for wet areas**
  - Yoga Soft Step 32
  - Heronrib 2000 33
  - Heron Floorline 34
- **Special mats for various areas**
  - Yoga Tred 36
  - Heron FlexiLine 37
  - Heron FlexiButton 38
  - Insulation mat 39
  - Fine-ribbed mats 40

# ICON legend

In order to make it easier for our customers to find the right products, we assigned icons to our mats showing the benefits and main properties at a glance.



CONDUCTIVE

OPEN TO TRAFFIC

FOOD INDUSTRY

SERVICE

GUARANTEE

WORKING SAFETY

SLIP RESISTANT

DRAINAGE

ANTI-BACTERIAL

CHEMICAL RESISTANT

QUALITY

INSULATION MAT

FIRE RESISTANT

ERGONOMICS

FAST

DELIVERY

# WORK STATION MATS

MODULAR SYSTEM

SPECIAL

AREA COVER

WET AREA

OPEN

ESD



## ■ Ergonomic, with closed surface



# Yogameter



## Applications

Suitable for dry work areas where people walking or standing work, e.g.:

- Assembly lines, workbenches and workstations at machinery
- Order-picking and packet-assembly workplaces
- Storage areas (for corridors and passageways)
- Sales counters and helpdesk

## The benefits at a glance

- The floor cover consisting of millions of air cells provides a physiologically correct cushioning and prevents tired legs and back pains
- Reduces the impact-sound level in the working areas
- The floor cover attaches itself smoothly and securely to the floor and lies absolutely flat after a short period
- Bevelled edges to reduce tripping hazards
- Achieves a very good insulation against cold floors
- Easy cleaning, thanks to the sealed surface
- Temperatures-resistant up to +60 °C
- Silicon-free

## Specifications

**Sizes:** Mats: 60 x 90 cm, 91 x 150 cm  
Rolls: 91/122 cm x max. 18,3 m

**Thickness:** 9 mm

**Weight:** 2,6 kg/m<sup>2</sup>

**Color:**



grey

**Material:** Polyvinyl chloride (PVC)

**Surface:** closed/grooved tread

## Additional properties

**Flame-resistance:**

–

**Chemical-resistance:**

–

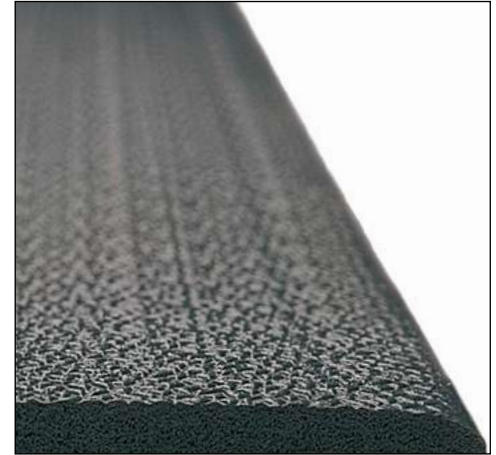
**Maximum slip-resistance:**

very good / R11 (DIN 51130)

**Effective drain-through and aeration:**

–

# Yoga Super



## Applications

Suitable for dry work areas where people walking or standing work, e.g.:

- Packstations, assembly stations and assembly lines
- Laboratories and test rooms
- For all areas where work involves very much walking

## The benefits at a glance

- Thanks to the Zedlan material, Yoga Super is three times more elastic than traditional workplace floor covers made of vinyl and thus makes walking easier
- The surface has the structure of an orange peel, which ensures a good slip-resistance in combination with the properties of Zedlan
- Easy to clean
- Approved according to ESD (Electro-Static-Discharge) standards
- Does not lose its elasticity even in case of low temperatures
- Highly wear-resistant and durable
- Temperatures-resistant up to +60 °C
- Silicon-free

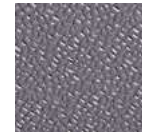
## Specifications

**Sizes:** Mats: 60 x 90 cm, 91 x 150 cm  
Rolls: 91/122 cm x max. 18,3 m

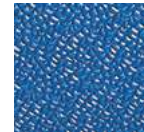
**Thickness:** 10 mm

**Weight:** 3,0 kg/m<sup>2</sup>

**Color:**



grey



blue

**Material:** Zedlan (based on Vinyl)

**Surface:** closed / orange-peel texture

## Additional properties

**Flame-resistance:**

–

**Chemical-resistance:**

–

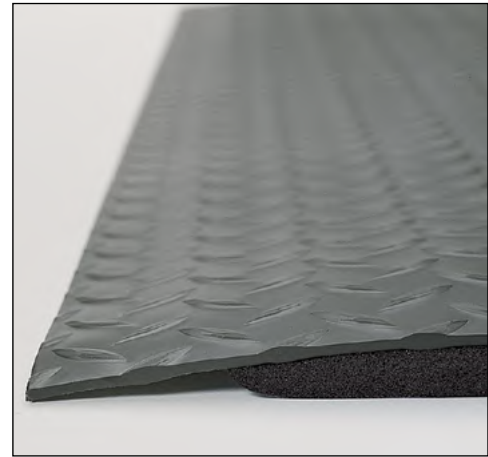
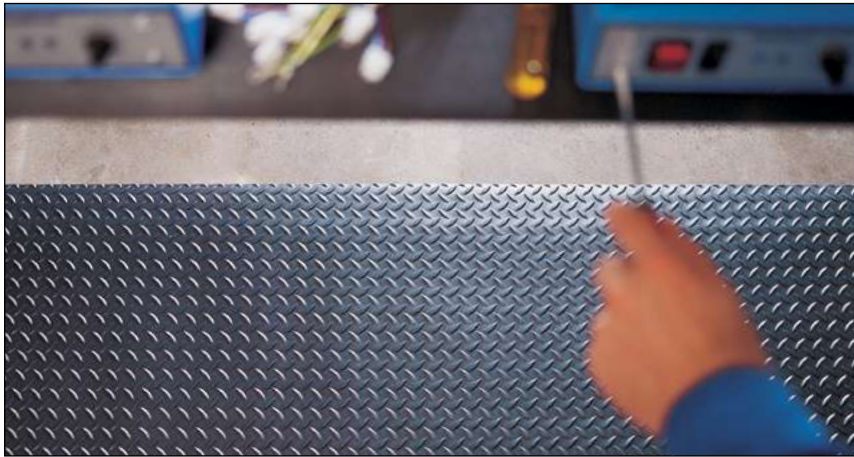
**Maximum slip-resistance:**

good / R10 (DIN 51130)

**Effective drain-through and aeration:**

V4 (DIN 51130)

# Yoga Deck



## Applications

Suitable for dry work areas where people walking or standing work, e.g.:

- Assembly lines, workbenches and workstations at machinery
- Order-picking and packet-assembly workplaces

## The benefits at a glance

- The cover consists of a top material of hard PVC with diamond pattern and a bottom material of foamed PVC. The top and bottom materials are vulcanised and absolutely firmly interconnected. Millions of air cells of the bottom material provide the physiologically correct cushioning and prevent tired legs and back pains
- Available in black or black with yellow signal strips for improved passage marking
- Has a noise-absorbing effect, reduces the impact-sound level in the working areas
- The cover does not need to be glued, but attaches itself smoothly and securely to the floor and lies absolutely flat after a short period
- Bevelled edges for easy moving around
- Its non-porous surface ensures easy and perfect cleaning
- Temperatures-resistant up to +60 °C

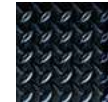
## Specifications

<b>Sizes:</b>	<b>Mats:</b>	60 x 90 cm, 91 x 150 cm, 91 x 360 cm, 91 x 600 cm
	<b>Rolls:</b>	91 cm x max. 18,3 m 120 cm x max. 18,3 m 150 cm x max. 22,8 m

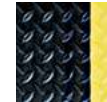
**Thickness:** 12 mm

**Weight:** 5,9 kg/m<sup>2</sup>

**Color:**



black



black with yellow  
edging strips

**Material:** Polyvinyl chloride (PVC)

**Surface:** closed / diamond pattern

## Additional properties

**Flame-resistance:**

–

**Chemical-resistance:**

–

**Maximum slip-resistance:**

good / R10 (DIN 51130)

**Effective drain-through and aeration:**

V10 (DIN 51130)



# Yoga Worklight



## Applications

Yoga Worklight is perfectly suitable for workplaces, where the employees alternately sit and stand and where the appearance of the mat is very important, such as reception desks or sales counters.

## The benefits at a glance

- Nice appearance
- The mats don't need to be fixed on the floor. There is a special covering on the back, so they can't get out of place.
- Bevelled edges to reduce trip hazards
- The smooth surface reduces time and effort for cleaning and further it enables the employee to use an office chair on it.
- Easy to cut to size to adapt to any working place
- Temperatures-resistant up to +60 °C

## Specifications

**Sizes:** 91 cm x max. 18,3 m

**Thickness:** 13 mm

**Weight:** 6,3 kg/m<sup>2</sup>

**Color:**



dark grey



light grey



brown

**Material:** 100 % Polyvinyl chloride (PVC)

**Surface:** closed/smooth

## Additional properties

**Flame-resistance:**

–

**Chemical-resistance:**

–

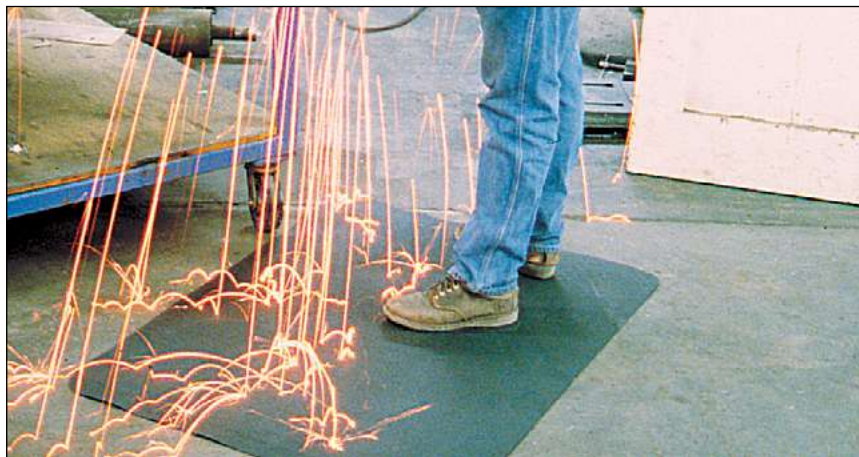
**Maximum slip-resistance:**

–

**Effective drain-through and aeration:**

–

# Yoga Spark



## Applications

Yoga Spark has been developed especially for use at welding workplaces.

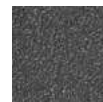
## The benefits at a glance

- The cover consists of a top material of rubber with orange-peel texture and a bottom material of foamed rubber. The top and bottom materials are vulcanised and absolutely firmly interconnected. Millions of air cells of the bottom material provide the physiologically correct cushioning and prevent tired legs and back pains
- Has a noise-absorbing effect, reduces the impact-sound level in the working areas
- The cover does not need to be glued, but attaches itself smoothly and securely to the floor and lies absolutely flat after a short period
- Bevelled edges to reduce trip hazards
- The mat provides excellent insulations against cold floors
- Its non-porous surface ensures easy and perfect cleaning
- Is easy to cut into shape and thus can be ideally adapted to the workplace

## Specifications

**Sizes:** Mats: 60 x 90 cm, 91 x 150 cm, 91 x 360 cm, 91 x 600 cm  
Rolls: 91 cm x max. 18,3 m

**Thickness:** 10 mm  
**Weight:** 5,8 kg/m<sup>2</sup>  
**Color:**



black

**Material:** rubber  
**Surface:** closed/orange-peel texture

## Additional properties

**Flame-resistance:**

–

**Chemical-resistance:**

–

**Maximum slip-resistance:**

good / R10 (DIN 51130)

**Effective drain-through and aeration:**

–

# Yoga Industrie



## Applications

Ideal for all working areas where large surfaces are to be covered.

## The benefits at a glance

- Ideally suited for all areas requiring a safe and slip resistant surface
- The individual mats can be easily connected and made to fit your coverage requirements
- Has a noise-absorbing effect and reduces the impact-sound level in the areas of use
- The 17 mm thick matting effectively insulates against cold floors
- In combination with edging including corners, the floor cover can be passed over (sack trolleys, handcarts etc.)
- The mats are easy to cut into shape and can be individually adapted to the circumstances
- Easy to clean

## Specifications

**Sizes:** 90 x 90 cm

**Thickness:** 17 mm

**Weight:** 12,8 kg/m<sup>2</sup>

**Color:**



black

**Material:** rubber

**Surface:** closed/orange-peel texture

**Accessories:** edging with corner / black or yellow  
96,5 x 6,5 cm

## Additional properties

**Flame-resistance:**

–

**Chemical-resistance:**

–

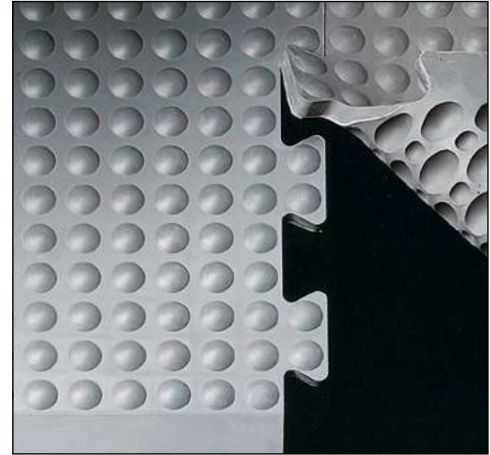
**Maximum slip-resistance:**

good / R10 (DIN 51130)

**Effective drain-through and aeration:**

–

# Yoga Flex



## Applications

Ideal for use at industry workplaces and long assembly lines.

## The benefits at a glance

- The material is regularly checked and controlled by TÜV Rheinland
- Ideal physiological cushioning thanks to raised domes on the upper surface
- Has a noise-absorbing effect, reduces the impact-sound level in the working areas
- Bevelled edges to reduce trip hazards
- Functional design and easy handling
- Insulation against cold floors
- The individual center pieces can be joined to a carpet of any length with high accuracy in fitting by means of dovetail joints. End pieces are put on as a surround.
- Yoga Flex can be passed over (sack trolleys, handcarts etc.)
- Easy to clean

## Specifications

**Sizes:** Endpiece: 80 x 30 cm  
Centerpiece: 80 x 70 cm  
Single Mat: 60 x 90 cm  
Special sizes and shapes on request

**Thickness:** 14 mm

**Weight:** 11,0 kg/m<sup>2</sup>

**Color:**



grey

**Material:** rubber

**Hardness:** 50° Shore A +/- 5

**Surface:** closed/raised dome

## Additional properties

**Flame-resistance:**

–

**Chemical-resistance:**

–

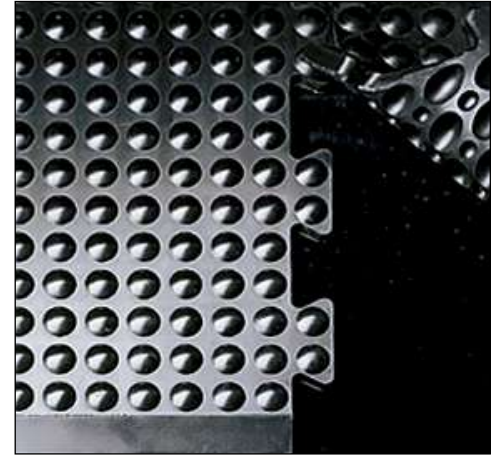
**Maximum slip-resistance:**

–

**Effective drain-through and aeration:**

–

# Yoga Flex Industrie



## Applications

Ideal for use at industry workplaces and long assembly lines.

## The benefits at a glance

- The material is regularly checked and controlled by TÜV Rheinland
- Ideal physiological cushioning thanks to raised domes on the upper surface
- Has a noise-absorbing effect, reduces the impact-sound level in the working areas
- Bevelled edges to reduce trip hazards
- The 14 mm thick matting effectively insulates against cold floors
- The floor cover consisting of nitrile rubber is resistant to most chemicals and oils
- The individual center pieces can be joined to a carpet of any length with high accuracy in fitting by means of dovetail joints. End pieces are put on as a surround
- Yoga Flex Industrie can be passed over (sack trolleys, handcarts etc.)
- Easy to clean

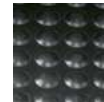
## Specifications

**Sizes:** Endpiece: 80 x 30 cm  
Centerpiece: 80 x 70 cm  
Single Mat: 60 x 90 cm  
Special sizes and shapes on request

**Thickness:** 14 mm

**Weight:** 11,1 kg/m<sup>2</sup>

**Color:**



black

**Material:** Nitrile rubber

**Hardness:** 50° Shore A +/- 5

**Surface:** closed/raised dome

## Additional properties

**Flame-resistance:**

–

**Chemical-resistance:**

resistant to most chemicals and oils  
(please ask for test samples)

**Maximum slip-resistance:**

–

**Effective drain-through and aeration:**

–

# Yoga Dome



## Applications

Ideal for use at industry workplaces and long assembly lines.

## The benefits at a glance

- Bevelled edges to reduce trip hazards
- Ergonomic because of its raised dome surface
- Has a noise-absorbing effect, reduces the impact-sound level in the working areas
- Insulation against cold floors
- Yoga Dome can be passed over (sack trolleys, handcarts etc.)
- Easy to clean

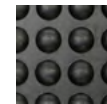
## Specifications

**Sizes:** Endpiece: 90 x 120 cm  
Centerpiece: 90 x 120 cm  
Single Mat: 60 x 90 cm  
90 x 120 cm

**Thickness:** 13 mm

**Weight:** 8,0 kg/m<sup>2</sup>

**Color:**



black

**Material:** rubber

**Surface:** closed/raised dome

**Hardness:** 55° Shore A +/- 5

## Additional properties

**Flame-resistance:**

–

**Chemical-resistance:**

–

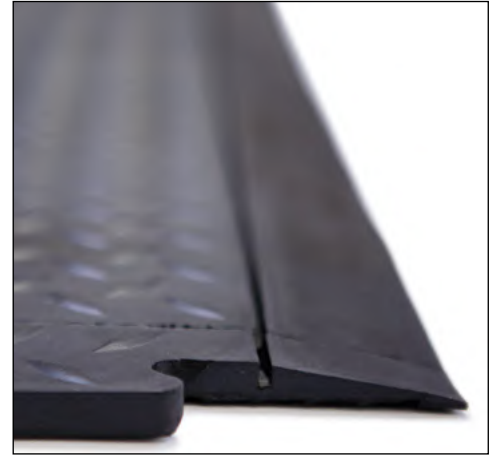
**Maximum slip-resistance:**

normal / R9 (DIN 51130)

**Effective drain-through and aeration:**

V10 (DIN 51130)

# Yoga Lock



## Applications

Ideal for use at industry workplaces and long assembly lines.

## The benefits at a glance

- Bevelled edges to reduce trip hazards
- Ergonomic thanks to diamond-pattern surface
- Has a noise-absorbing effect, reduces the impact-sound level in the working areas
- Insulation against cold floors
- Yoga Lock can be passed over (sack trolleys, handcarts etc.)
- Easy to clean

## Specifications

**Sizes:** Endpiece: 71 x 78 cm  
Centerpiece: 71 x 78 cm  
Single Mat: 71 x 78 cm

**Thickness:** 13 mm

**Weight:** 5,0 kg/m<sup>2</sup>

**Color:**



black

**Material:** rubber

**Hardness:** 55° Shore A +/- 5

**Surface:** closed/diamond pattern

## Additional properties

**Flame-resistance:**

–

**Chemical-resistance:**

–

**Maximum slip-resistance:**

normal / R9 (DIN 51130)

**Effective drain-through and aeration:**

V8 (DIN 51130)

# Yoga Ergonomie



## Applications

Ideal for use at industry workplaces.

## The benefits at a glance

- Ideal for floors where a dry, anti-skid and non-slip surface is desired
- Ideal physiological cushioning thanks to raised domes on the upper surface
- Bevelled edges to reduce trip hazards
- Has a noise-absorbing effect and reduces the impact-sound level in the areas of use
- The 14 mm thick matting effectively insulates against cold floors
- The floor cover consisting of 100% polyurethane (flexible foam) is partly resistant to oil and most chemicals
- Resistant to temperatures from -40 °C up to +80 °C
- Yoga Ergonomie can be passed over (sack trolleys, handcarts, material shuttles etc.)
- Easy to clean

## Specifications

**Sizes:** 65 x 95 cm, 65 x 185 cm,  
95 x 125 cm, 95 x 185 cm  
Special sizes and shapes on request

**Thickness:** 14 mm

**Weight:** 5,0 kg/m<sup>2</sup>

**Color:**



grey

**Material:** Polyurethane

**Hardness:** 30° Shore A +/- 5

**Surface:** closed/raised dome

## Additional properties

**Flame-resistance:**

DIN 4102 B2

**Chemical-resistance:**

partly resistant to chemicals and oils  
(ask for test samples)

**Maximum slip-resistance:**

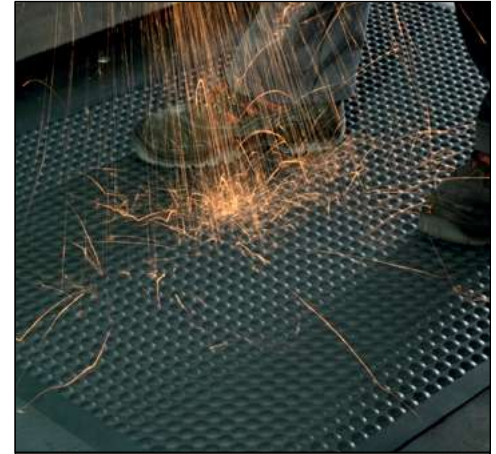
good / R10 (DIN 51130)

**Effective drain-through and aeration:**

V10 (DIN 51130)



# Yoga Ergonomie B1



## Applications

Ideal for use at industry workplaces, where hardly inflammable workplace mats are required.

## The benefits at a glance

- Ideal for floors where a dry, anti-skid and non-slip surface is desired
- Ideal physiological cushioning thanks to raised domes on the upper surface
- Bevelled edges to reduce trip hazards
- Has a noise-absorbing effect and reduces the impact-sound level in the areas of use
- The 14 mm thick matting effectively insulates against cold floors
- The floor cover consisting of 100 % polyurethane (flexible foam) is partly resistant to oil and most chemicals
- Resistant to temperatures from -40 °C up to +80 °C
- Version B1 fire resistant
- Yoga Ergonomie B1 can be passed over (sack trolleys, handcarts, material shuttles etc.)
- Easy to clean

## Specifications

**Sizes:** 65 x 95 cm, 65 x 185 cm,  
95 x 125 cm, 95 x 185 cm  
Special sizes and shapes on request

**Thickness:** 14 mm

**Weight:** 5,0 kg/m<sup>2</sup>

**Color:**



grey

**Material:** Polyurethane

**Hardness:** 30° Shore A +/- 5

**Surface:** closed / raised dome

## Additional properties

**Flame-resistance:**

fire resistant (B1)

**Chemical-resistance:**

partly resistant to chemicals and oils  
(ask for test samples)

**Maximum slip-resistance:**

good / R10 (DIN 51130)

**Effective drain-through and aeration:**

V10 (DIN 51130)

# Yoga Ergonomie ESD



## Applications

Ideal for use at industry workplaces where a reliable elimination of electrostatic charging is required.

## The benefits at a glance

- Ideal for floors where a dry, anti-skid and non-slip surface is desired
- Ideal physiological cushioning thanks to raised domes on the upper surface
- Bevelled edges to reduce trip hazards
- Has a noise-absorbing effect and reduces the impact-sound level in the areas of use.
- The 14 mm thick matting effectively insulates against cold floors
- The floor cover consisting of 100% polyurethane (flexible foam) is partly resistant to oil and most chemicals
- Resistant to temperatures from -40 °C up to +80 °C
- Yoga Ergonomie can be passed over (sack trolleys, handcarts, material shuttles etc.)
- Easy to clean

## Specifications

**Sizes:** 65 x 95 cm, 65 x 185 cm,  
95 x 125 cm, 95 x 185 cm  
Special sizes and shapes on request

**Thickness:** 14 mm

**Weight:** 5,0 kg/m<sup>2</sup>

**Color:**  black

**Material:** Polyurethane

**Hardness:** 30° Shore A +/- 5

**Surface:** closed/raised dome

**Accessories:** grounding cable

## Additional properties

**Flame-resistance:**

DIN 4102 B2

**Chemical-resistance:**

partly resistant to chemicals and oils  
(ask for test samples)

**Maximum slip-resistance:**

good / R10 (DIN 51130)

**Effective drain-through and aeration:**

V10 (DIN 51130)

**Conductive:** DIN IEC 61340-4-1 /

ESD 1 x 10<sup>5</sup> - 10<sup>7</sup> Ohm

# Yoga Ergonomie B1 + ESD



## Applications

Ideal for use at industry workplaces, at ESD workplaces or at production plants of sensitive devices.

## The benefits at a glance

- Ideal for floors where a dry, anti-skid and non-slip surface is desired
- Ideal physiological cushioning thanks to raised domes on the upper surface
- Bevelled edges to reduce trip hazards
- Has a noise-absorbing effect and reduces the impact-sound level in the areas of use
- The 14 mm thick matting effectively insulates against cold floors
- The floor cover consisting of 100 % polyurethane (flexible foam) is partly resistant to oil and most chemicals
- Resistant to temperatures from -40 °C up to +80 °C
- Combined ESD+B1 version
- Yoga Ergonomie can be passed over (sack trolleys, handcarts, material shuttles etc.)
- Easy to clean

## Specifications

**Sizes:** 65 x 95 cm, 65 x 185 cm,  
95 x 125 cm, 95 x 185 cm  
Special sizes and shapes on request

**Thickness:** 14 mm

**Weight:** 5,0 kg/m<sup>2</sup>

**Color:**  black

**Material:** Polyurethane

**Hardness:** 30° Shore A +/- 5

**Surface:** closed/raised dome

**Accessories:** grounding cable

## Additional properties

**Flame-resistance:**  
fire resistant (B1)

**Chemical-resistance:**  
partly resistant to chemicals and oils  
(ask for test samples)

**Maximum slip-resistance:**  
good / R10 (DIN 51130)

**Effective drain-through and aeration:**  
V10 (DIN 51130)

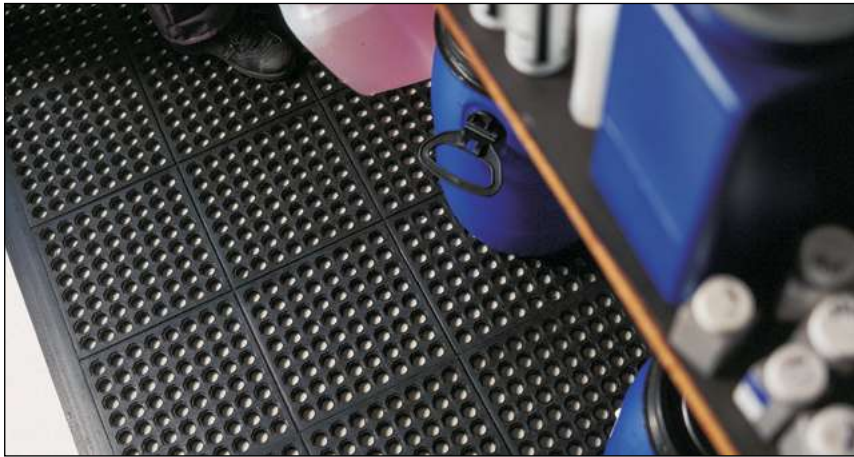
**Conductive:** DIN IEC 61340-4-1 /  
ESD 1 x 10<sup>5</sup> - 10<sup>7</sup> Ohm



## ■ Ergonomic, with perforated surface



# Yoga Allround



## Applications

Ideal for the industry workplace where drainage of liquids is required.

## The benefits at a glance

- Ideal for floors where a dry, anti-skid and non-slip surface is desired
- The individual mats can be easily connected and made to fit your coverage requirements
- Has a noise-absorbing effect and reduces the impact-sound level in the areas of use
- The 15 mm thick workplace flooring insulates against cold floors
- In combination with edging including corners, the floor cover can be passed over (sack trolleys, handcarts etc.)
- The mats are easy to cut into shape and thus can be individually adapted to the circumstances
- Easy to clean

## Specifications

**Sizes:** 90 x 90 cm

**Thickness:** 15 mm

**Weight:** 8,4 kg/m<sup>2</sup>

**Color:**



black

**Material:** rubber

**Surface:** perforated

**Accessories:** edging with corner / black or yellow  
96,5 x 6,5 cm

## Additional properties

**Flame-resistance:**

–

**Chemical-resistance:**

–

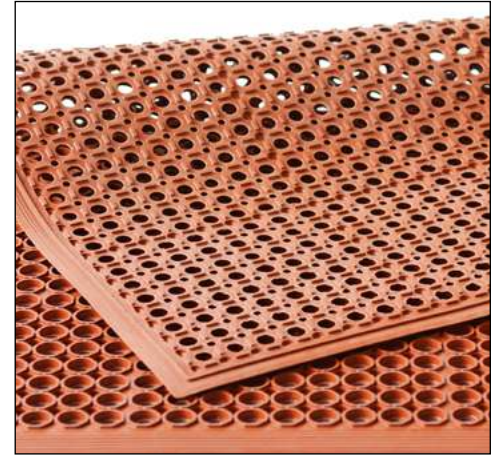
**Maximum slip-resistance:**

good / R10 (DIN 51130)

**Effective drain-through and aeration:**

V10 (DIN 51130)

# Yoga Hygien NBR



## Applications

Ideal for all work areas where special hygiene is required. Designed specifically for use in the food processing industry, in the commercial sector and in commercial kitchens.

## The benefits at a glance

- Good standing comfort
- Bevelled edges to reduce trip hazards
- Resistant to animal fats, chemicals and oils in case of short-term exposure
- Very well accessible and easily passable
- Perforated surface allows the expiration of liquids
- Anti-skid and non-slip surface

## Specifications

**Sizes:** 90 x 150 cm  
Special sizes and shapes on request

**Thickness:** 13 mm

**Weight:** 8,0 kg/m<sup>2</sup>

**Color:**



red

**Material:** Nitrile rubber

**Surface:** perforated

## Additional properties

**Flame-resistance:**

–

**Chemical-resistance:**

resistant to animal fats, chemicals and oils in case of short-term exposure (please ask for test samples)

**Maximum slip-resistance:**

good / R10 (DIN 51130)

**Effective drain-through and aeration:**

V10 (DIN 51130)

# Yoga Hygien NR



## Applications

Ideal for all working areas where drainage of liquids is required.

## The benefits at a glance

- Good standing comfort
- Bevelled edges to reduce trip hazards
- Very well accessible and easily passable
- Perforated surface allows the expiration of liquids
- Small parts such as screws or chips fall through it
- Anti-skid and non-slip surface

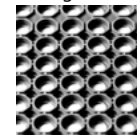
## Specifications

**Sizes:** 90 x 150 cm

**Thickness:** 13 mm

**Weight:** 7,5 kg/m<sup>2</sup>

**Color:**



black

**Material:** rubber

**Surface:** perforated

## Additional properties

**Flame-resistance:**

–

**Chemical-resistance:**

–

**Maximum slip-resistance:**

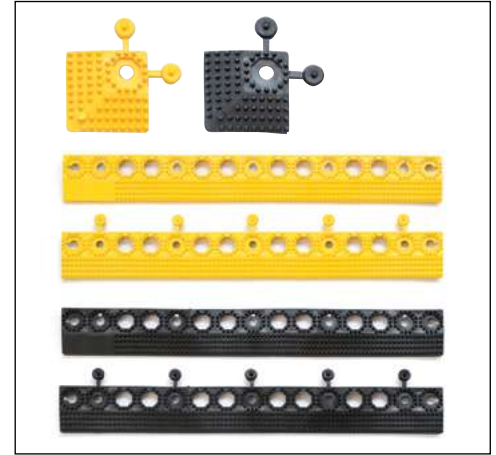
good / R10 (DIN 51130)

**Effective drain-through and aeration:**

V10 (DIN 51130)



# Yoga Grid



## Applications

Suitable for moist, wet and dry working areas.

- indoor and outdoor use
- Order-picking, packet-assembly workplaces and assembly stations
- terraces, cold stores

## The benefits at a glance

- Ideal for floors where an anti-skid and non-slip surface is desired
- Resistant to UV radiation, acids and alkaline solutions
- Easy drainage from water and other fluids
- The 16 mm thick floor grate insulates against cold floors
- Has a noise-absorbing effect and thus reduces the impact-sound level
- Resistant to temperatures from -23 °C up to +60 °C
- Withstands mechanical loads and is extremely wear-resistant
- Individual modules: well suitable for large areas as well
- Easy to clean

## Specifications

**Sizes:** 50 x 50 cm

**Thickness:** 16 mm

**Weight:** 4,3 kg/m<sup>2</sup>

**Color:**



black

**Material:** Polyvinyl chloride (PVC)

**Hardness:** 55° Shore A +/- 5

**Surface:** open/pimpled

**Accessories:** edging with corner / black or yellow

## Additional properties

**Flame-resistance:**

–

**Chemical-resistance:**

resistant to most chemicals, oils and fats (please ask for test samples)

**Maximum slip-resistance:**

very good / R12 (DIN 51130)

**Effective drain-through and aeration:**

V10 (DIN 51130)

# Yoga Roll



## Applications

Yoga Roll has been developed for workstations which may involve liquid or oil spillage.

## The benefits at a glance

- Ideal for floors where a dry, anti-skid and non-slip surface is desired
- Resistant to UV radiation (except red flooring), acids and alkaline solutions, corrosion-proof
- The floor grate made of 100% PVC is completely colored
- Representative design and easy handling
- Easy drainage from water and other fluids
- The 15 mm thick floor grate insulates against cold floors
- Has a noise-absorbing effect and thus reduces the impact-sound level
- Resistant to temperatures from -23 °C up to +60 °C
- The floor grate can be passed over by sack trolleys and lift trucks
- Withstand pressure and mechanical loads
- Easy to cut to size to adapt to any working place
- Easy to clean

## Specifications

**Sizes:** 60/91/122 cm x max. 10 m

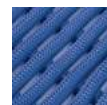
**Thickness:** 15 mm

**Weight:** 7,7 kg/m<sup>2</sup>

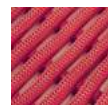
**Color:**



black



blue



red

**Material:** Polyvinyl chloride (PVC)

**Hardness:** 80° Shore A +/- 5

**Surface:** open/profiled

**Accessories:** connector clips, floor hooks, edging strips

## Additional properties

**Flame-resistance:**

–

**Chemical-resistance:**

resistant to oil and chemicals in case of short-term exposure (please ask for test samples)

**Maximum slip-resistance:**

very good / R11 (DIN 51130)

**Effective drain-through and aeration:**

V10 (DIN 51130)

# Yoga Holzrost



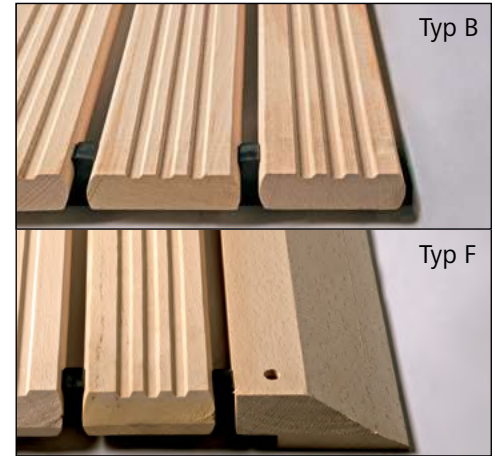
## Applications

Yoga Holzrost is suitable for use in dry and wet areas:

- Before milling and cutting machines and CNC centres.
- Wherever the work involves metal and wood chips

## The benefits at a glance

- The timber grate is made of ribbed beech wood. The individual strips of wood are connected using a PVC-coated steel cable; zinc-plated threaded bolts with hexagon socket screws are used as closure.
- Thanks to its rubber bases on the bottom, the stress on the spine and the entire musculature is reduced when standing
- The ribbed strips of wood have a slip-resistant effect.
- Metal filings and wood shavings pass between the profiles
- The timber grate resistant to oil and chemicals can be integrated into various working areas
- The floor can be cleaned comfortably by rolling up the grate
- Withstands pressure and mechanical loads
- In combination with access wedges, the timber grate can be passed over by floor conveyors as well



## Specifications

**Sizes:** 80/100/120/150 cm x max. 10 m  
Special sizes and shapes on request

**Thickness:** 35 mm (standard height)  
45/55/70/100 mm (special height)

**Weight:** 15,1 kg/m<sup>2</sup>

**Color:**  beech

**Material:** beech wood

**Surface:** open/ribbed

**Typ B:** without profile strips and bevel

**Typ F:** 2 profile strips (broad-sides)  
1 bevel (long side)

## Additional properties

**Flame-resistance:**

–

**Chemical-resistance:**

resistant to oil, gasoline and most chemicals (please ask for test samples)

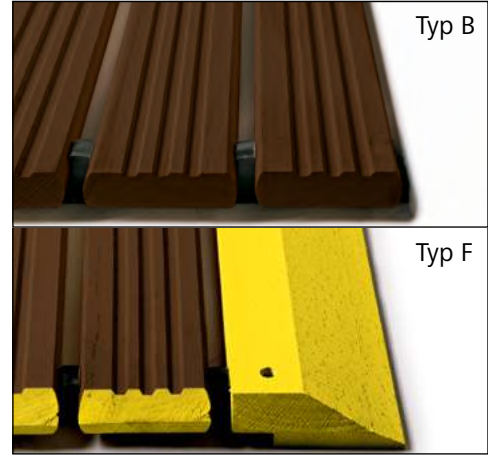
**Maximum slip-resistance:**

very good / R11 (DIN 51130)

**Effective drain-through and aeration:**

V10 (DIN 51130)

# Yoga Holzrost GL



## Applications

Yoga Holzrost is suitable for use in dry and wet areas:

- Before milling and cutting machines and CNC centres.
- Wherever the work involves metal and wood chips

## The benefits at a glance

- The timber grate is made of dark stained beech wood. The individual strips of wood are connected using a PVC-coated steel cable; zinc-plated threaded bolts with hexagon socket screws are used as closure.
- The special treatment of wood increases the resistance to fluids & dirt
- Thanks to its rubber bases on the bottom, the stress on the spine and the entire musculature is reduced when standing
- The ribbed strips of wood have a slip-resistant effect.
- Metal filings and wood shavings pass between the profiles
- The timber grate resistant to oil and chemicals can be integrated into various working areas
- The floor can be cleaned comfortably by rolling up the grate
- Withstands pressure and mechanical loads
- In combination with access wedges, the timber grate can be passed over by floor conveyors as well

## Specifications

<b>Sizes:</b>	80/100/120/150 cm x max. 10 m Special sizes and shapes on request
<b>Thickness:</b>	35 mm (standard height) 45/55/70/100 mm (special height)
<b>Weight:</b>	15,1 kg/m <sup>2</sup>
<b>Color:</b>	 dark stained beech
<b>Material:</b>	beech wood
<b>Surface:</b>	open/ribbed
<b>Typ B:</b>	without profile strips and bevel
<b>Typ F:</b>	2 profile strips (broad-sides) 1 bevel (long side)

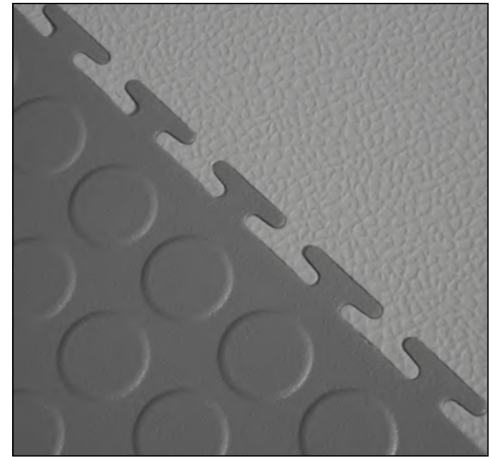
## Additional properties

<b>Flame-resistance:</b>	–
<b>Chemical-resistance:</b>	resistant to oil, gasoline and most chemicals (please ask for test samples)
<b>Maximum slip-resistance:</b>	very good / R11 (DIN 51130)
<b>Effective drain-through and aeration:</b>	V10 (DIN 51130)

## ■ Wall-to-wall floor covers



# Yoga Tile



## Applications

Areas of use with high foot traffic and heavy load traffic such as fork lifts, industrial plants, warehouses, garages, workshops, fairs or showrooms.

## The benefits at a glance

- 10-year warranty
- Ideal for large areas where a slip-resistant floor is required
- Extremely wear resistant
- ESD version available (BS EN 61340-5-1:2007 & IEC 61340)
- Resistance to most common chemicals
- Insulates against cold floors and sound-absorbing
- Individual design of the tiles with logo possible
- Connection of the individual elements with a open puzzle joint
- Withstands pressure and mechanical loads
- Recyclable

## Specifications

**Sizes:** 50 x 50 cm

**Thickness:** 7 mm

**Weight:** ca. 9,0 kg/m<sup>2</sup>

**Color:**



blue, antracite,  
yellow,



green, red,  
black

raised disk only in blue / antracite

**Surface:** closed / smooth or raised disk

**Material:** Polyvinyl chloride (PVC)

**Hardness:** 89-92 ° Shore A

**Accessories:** edging strips with or without corner

## Additional properties

**Flame-resistance:**

fire resistant Bfl-S1 (DIN 13501)

**Chemical-resistance:**

resistant to most chemicals  
(please ask for test samples)

**Maximum slip-resistance:**

good / R10 (DIN 51130)

**Effective drain-through and aeration:**

-

# Yoga Tile Schiefer



## Applications

For indoor areas as widespread installation in warehouses, factories, workshops, Schools, sports club, showrooms or retail stores.

## The benefits at a glance

- 10-year warranty
- Ideal for large areas where a slip-resistant floor is required
- Extremely wear resistant
- Resistance to most common chemicals
- Insulates against cold floors and sound-absorbing
- Withstands pressure and mechanical loads
- Recyclable
- Hidden joint / connection

## Specifications

**Sizes:** 50 x 50 cm

**Thickness:** 6 mm

**Weight:** ca. 8,0 kg/m<sup>2</sup>

**Color:**



antracite

**Material:** Polyvinyl chloride (PVC)

**Hardness:** 89-92° Shore A

**Surface:** closed / Slate look

## Additional properties

**Flame-resistance:**

fire resistant Bfl-S1 (DIN 13501)

**Chemical-resistance:**

resistant to most chemicals  
(please ask for test samples)

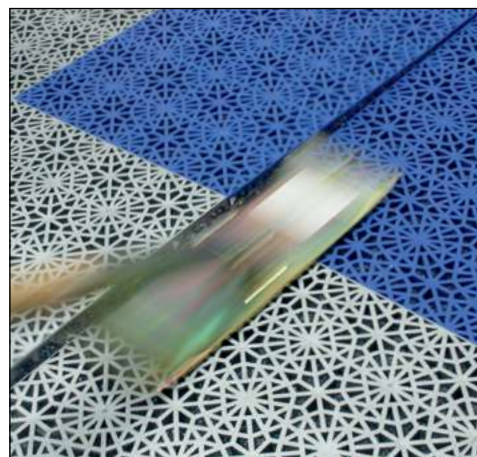
**Maximum slip-resistance:**

good / R9 (DIN 51130)

**Effective drain-through and aeration:**

—

# Yoga Rost



## Applications

Moist, wet and dry working areas, as well as outdoor and indoor areas:

- Wet rooms, laundry rooms, changing and shower rooms, swimming pools
- Order-picking, packet-assembly and assembly workplaces
- Heavy industry, automotive engineering, warehouses, upper decks of ships, exhibition stands, shop floors, commercial kitchens, cold stores

## The benefits at a glance

- Yoga Rost consists of individual loose tiles with perforated pattern which can be put together very easily to form a wall-to-wall floor covering
- Can be used for all floors where a dry, slip-resistant surface is desirable
- Representative design and easy handling
- Has a noise-absorbing effect and thus reduces the impact-sound level
- The 14 mm thick floor grate insulates against cold floors
- Resistant to temperatures from -18 °C up to +60 °C
- The floor grate consisting of 100 % polypropylene is resistant to UV light, oil, gasoline and most chemicals
- In combination with corners and edge strips, the flooring allows cargo transport and resists loads of up to 220t/m<sup>2</sup>

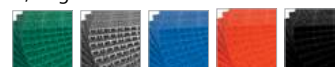
## Specifications

**Sizes:** 30 x 30 cm

**Thickness:** 14 mm

**Weight:** 3,4 kg/m<sup>2</sup>

**Color:**



green, silver, blue, red, black

**Material:** Polypropylene (PP)

**Surface:** open / perforated

**Accessories:** Edging strips, expansion strips, corner and disassembly tool

## Additional properties

**Flame-resistance:**

CE EN 14041

**Chemical-resistance:**

resistant to oil, gasoline and most chemicals (please ask for test samples)

**Maximum slip-resistance:**

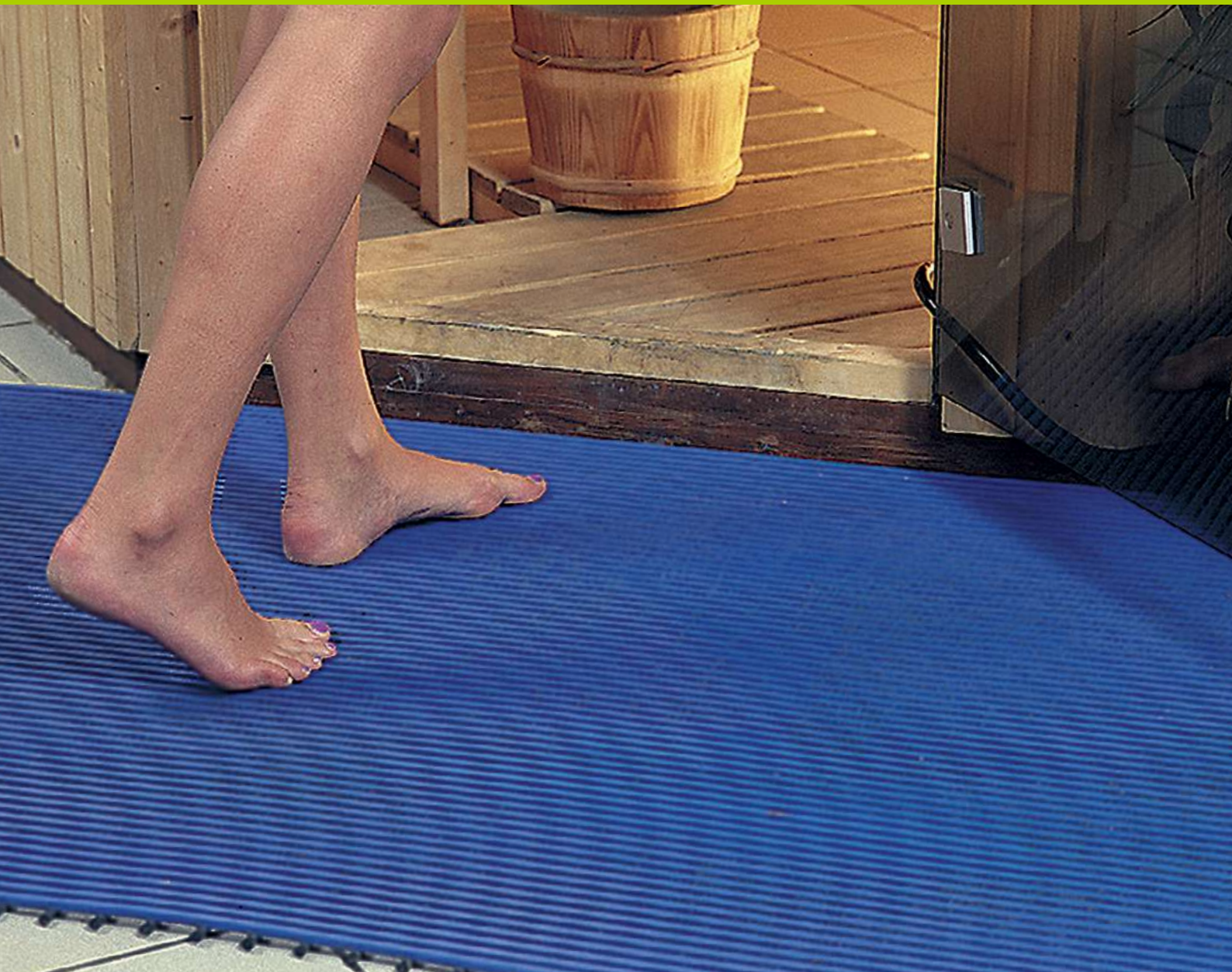
good / R10 (DIN 51130)

**Effective drain-through and aeration:**

V10 (DIN 51130)



## ■ Special floor covers for wet areas



# Yoga Soft Step



## Applications

Suitable for moist or wet and dry indoor and outdoor working areas:

- Shower and changing rooms, laundry rooms
- As carpet around the barefoot area of pools, saunas and whirlpools

## The benefits at a glance

- Ideal for barefoot areas where an anti-skid and non-slip surface is required
- Resistant to chlorine and sea-water, acids and alkalis solutions
- Completely colored floor cover made of 100% polyethylene
- Hygienic since produced without pores
- Attractive design, individual colors and easy handling
- Excellent drainage system; easy drainage from water and other fluids
- Good noise absorption
- Resistant to temperatures from -40°C up to +50°C
- Loose laid
- The floor grate is easy to cut into shape and thus can be individually adapted to the circumstances
- Easy to clean
- Resistant to UV radiation (except red)

## Specifications

**Sizes:** Mats: 60 x 90 cm  
Rolls: 60 cm x max. 15 m

**Thickness:** 9 mm

**Weight:** 2,2 kg/m<sup>2</sup>

**Color:**



blue, grey, red, white with black dots, yellow

**Material:** Polyethylene

**Surface:** open/profiled

## Additional properties

**Flame-resistance:**

–

**Chemical-resistance:**

resistant to chlorinated and salt water  
(please ask for test samples)

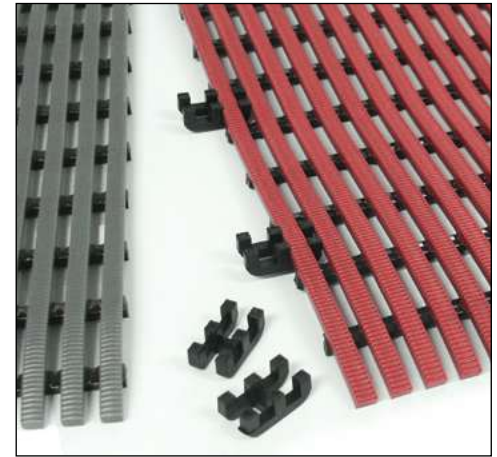
**Maximum slip-resistance:**

DIN 51097 B

**Effective drain-through and aeration:**

–

# Heronrib 2000



## Applications

Suitable for moist or wet and dry working areas, but particularly around the swimming pool, in shower and changing rooms as well as in laundry rooms.

## The benefits at a glance

- Ideal for **barefoot areas** where an anti-skid and non-slip surface is required
- Resistant to UV radiation (except red) and alkaline solutions
- Completely colored floor cover made of 100 % PVC; hygienic since produced without pores
- Excellent drainage system; easy drainage from water and other fluids
- Good noise absorption
- Resistant to temperatures from -23 °C up to +60 °C
- Loose laid
- Withstands pressure and mechanical loads
- Easy to cut to size to adapt to any working place
- Easy to clean

## Specifications

**Sizes:** 50/100 cm x max. 10 m

**Thickness:** 10 mm

**Weight:** 5,5 kg/m<sup>2</sup>

**Color:**



red



blue



green



grey

**Material:** Polyvinyl chloride (PVC)

**Surface:** open / profiled

**Accessories:** bridging connector

## Additional properties

**Flame-resistance:**

–

**Chemical-resistance:**

resistant to chlorinated and salt water  
(please ask for test samples)

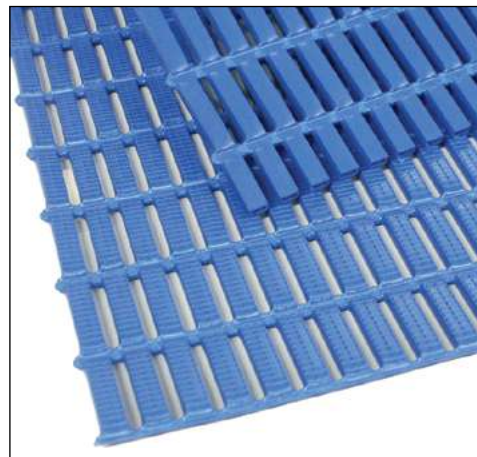
**Maximum slip-resistance:**

nach DIN 51097 C

**Effective drain-through and aeration:**

–

# Heron Floorline



## Applications

Suitable for moist or wet and dry working areas:

- Can be used as carpet in highly frequented passageways and corridors or as mat for workbenches

## The benefits at a glance

- Robust air-cell grid-like floor cover made of 100% PVC
- Slip-proof property thanks to finely profiled tread
- Corrosion-proof to most oils, resistant to acids and alkaline solutions by short time exposure
- Good noise absorption
- Resistant to temperatures from -23°C up to +60°C
- Loose laid
- Easy to cut to size to adapt to any working place
- Easy to clean

## Specifications

**Sizes:** 60/91 cm x max. 10 m

**Thickness:** 6 mm

**Weight:** 3,5 kg/m<sup>2</sup>

**Color:**



blue



red



green

**Material:** Polyvinyl chloride (PVC)

**Surface:** open/profiled

## Additional properties

**Flame-resistance:**

–

**Chemical-resistance:**

resistant to oil and most chemicals  
(please ask for test samples)

**Maximum slip-resistance:**

very good / R11 (DIN 51130)

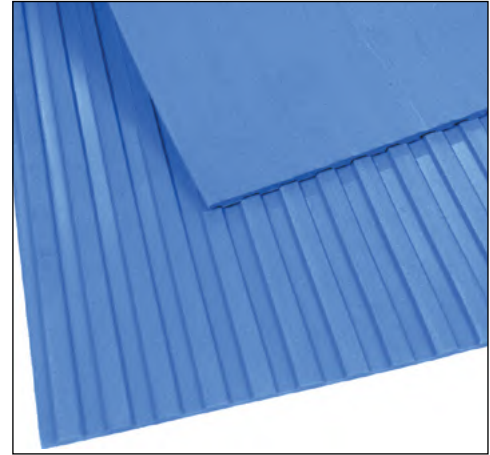
**Effective drain-through and aeration:**

V10 (DIN 51130)

## ■ Special mats for various areas



# Yoga Tred



## Applications

Suitable for moist or wet and dry working areas:

- Can be used as carpet in highly frequented passageways and corridors or as mat for workbenches

## The benefits at a glance

- 4 mm thick, closed floor cover with profiled surface
- Corrosion-proof against UV light and resistant to most alkaline solutions and acids
- Completely colored floor cover made of 100% PVC
- Easy handling
- Good noise absorption
- Resistant to temperatures from -23 °C up to +60 °C
- Loose laid
- Withstands pressure and mechanical loads
- Easy to cut to size to adapt to any working place
- Easy to clean

## Specifications

**Sizes:** 100 cm x max. 10 m

**Thickness:** 4 mm

**Weight:** 4,0 kg/m<sup>2</sup>

**Color:**



blue



black



grey

**Material:** Polyvinyl chloride (PVC)

**Hardness:** 80° Shore A +/- 5

**Surface:** closed/profiled

## Additional properties

**Flame-resistance:**

–

**Chemical-resistance:**

resistant to oil and most chemicals  
(please ask for test samples)

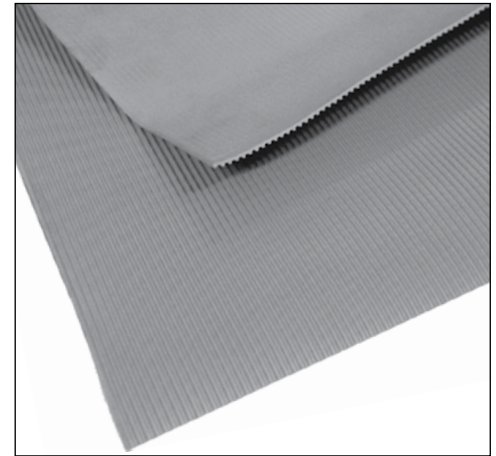
**Maximum slip-resistance:**

–

**Effective drain-through and aeration:**

–

# Heron FlexiLine



## Applications

Suitable for moist or wet and dry working areas:

- Can be used as carpet in highly frequented passageways and corridors or as mat for workbenches

## The benefits at a glance

- 2 mm thick, closed floor cover with grooved surface
- Corrosion-proof against UV light and resistant to most alkaline solutions and acids
- Completely colored floor cover made of 100 % PVC
- Protection of the floor against wear and tear
- Resistant to temperatures from -23 °C up to +60 °C
- Loose laid
- Easy to cut to size to adapt to any working place
- Easy to clean

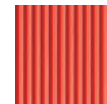
## Specifications

**Sizes:** 100 cm x max. 25 m

**Thickness:** 2 mm

**Weight:** 2,2 kg/m<sup>2</sup>

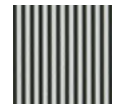
**Color:**



red



black



grey

**Material:** Polyvinyl chloride (PVC)

**Hardness:** 80° Shore A +/- 5

**Surface:** closed/ribbed

## Additional properties

**Flame-resistance:**

–

**Chemical-resistance:**

resistant to oil and most chemicals  
(please ask for test samples)

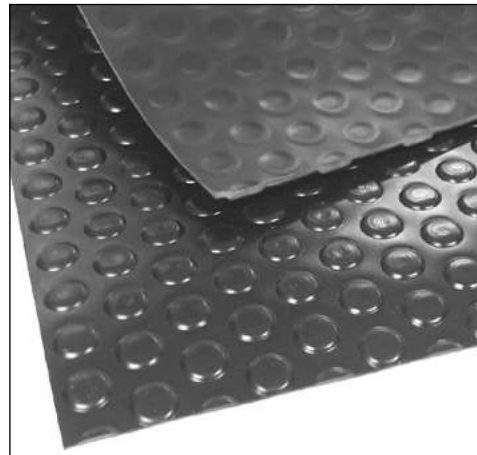
**Maximum slip-resistance:**

–

**Effective drain-through and aeration:**

–

# Heron FlexiButton



## Applications

Suitable for moist or wet and dry working areas:

- Can be used as carpet in highly frequented passageways and corridors or as mat for workbenches

## The benefits at a glance

- 3.3 mm thick, closed floor cover with raised disks on the surface
- Corrosion-proof against UV light and oil, resistant to alkaline solutions and acids in case of short-time exposure
- Completely colored floor cover made of 100 % PVC
- Protection of the floor against wear and tear
- Resistant to temperatures from -23 °C up to +60 °C
- Loose laid
- Withstands pressure and mechanical loads
- Easy to cut to size to adapt to any working place
- Easy to clean

## Specifications

**Sizes:** 98 cm x max. 20 m

**Thickness:** 3,3 mm

**Weight:** 4,4 kg/m<sup>2</sup>

**Color:**



blue



black



grey

**Material:** Polyvinyl chloride (PVC)

**Surface:** closed/raised disk

## Additional properties

**Flame-resistance:**

–

**Chemical-resistance:**

resistant to oil and most chemicals  
(please ask for test samples)

**Maximum slip-resistance:**

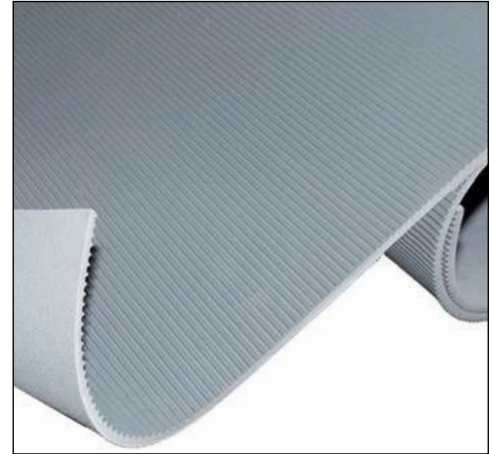
–

**Effective drain-through and aeration:**

–



# Insulation mat



## Applications

Suitable for dry working areas:

- Can be used as carpet for highly frequented electric working places or as table mat

## The benefits at a glance

- Closed floor covering with smooth or ribbed surface
- Completely colored floor cover made of 100% rubber
- Good noise absorption
- Loose laid
- Withstands pressure and mechanical loads
- Easy to clean

## Specifications

**Sizes:** 100 cm x max. 10 m

**Thickness:** 4 mm                      4,5 mm

**Weight:** 6,8 kg/m<sup>2</sup>                      8,1 kg/m<sup>2</sup>

**Color:**



grey smooth



grey ribbed

**Material:** rubber

**Hardness:** 65° Shore A +/- 5

**Surface:** closed/smooth or ribbed

## Additional properties

DIN EN 60243-1 (VDE 0303)

tested by VDE Testing and Certification  
Institut in Offenbach.

**Rec. operating voltage**

36.000 V

**Test voltage:**

50.000 V

# Fine-ribbed mats



## Applications

Suitable for dry work areas:

- As carpet in passageways and corridors
- Can be used as a mat for workbenches

## The benefits at a glance

- 3 mm thick, closed floor cover with grooved surface
- Slip-proof floor cover
- 100% SBR rubber
- Protection of the floor against wear and tear
- Loose laid
- Easy to cut to size to adapt to any working place

## Specifications

**Sizes:** 100/120 cm x max. 10 m

**Thickness:** 3 mm

**Weight:** 3,2 kg/m<sup>2</sup>

**Color:**



black

**Material:** rubber

**Hardness:** 80° Shore A +/- 5

**Surface:** closed/ribbed

## Additional properties

**Flame-resistance:**

–

**Chemical-resistance:**

–

**Maximum slip-resistance:**

–

**Effective drain-through and aeration:**

–





**Miltex GmbH**

Ohmstr. 2  
68519 Viernheim  
Germany

T +49 - 6204 - 70869 - 0  
F +49 - 6204 - 70869 - 29  
info@miltex.de  
**www.miltex.de**